

WORKPLACE CULTURAL CONNECTIONS

Genuinely acknowledging and respecting cultural identity in the workplace can boost confidence, wellbeing and job satisfaction.

Real understanding

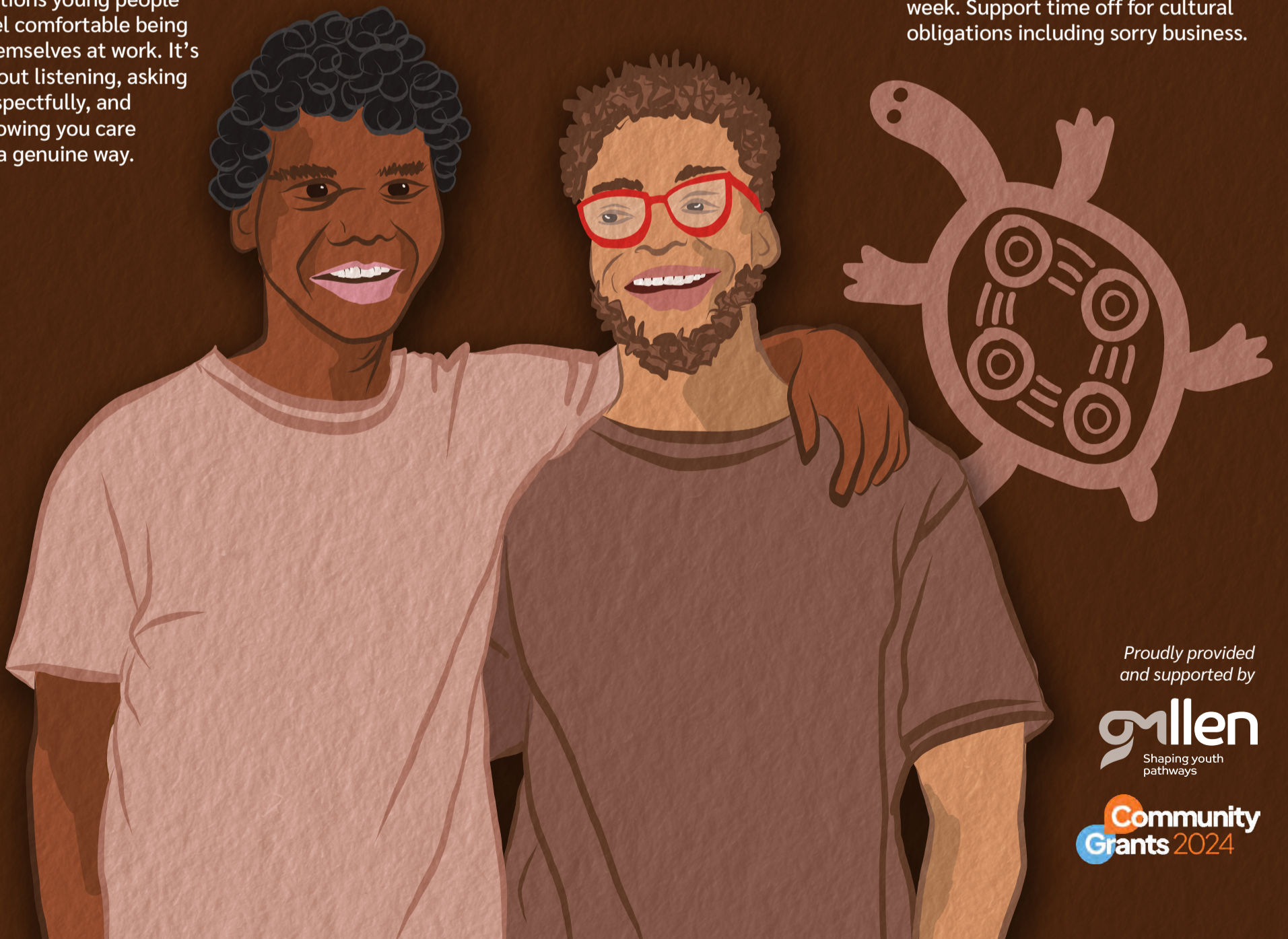
Making space for identity means letting First Nations young people feel comfortable being themselves at work. It's about listening, asking respectfully, and showing you care in a genuine way.

Networks + support

Link with First Nations networks or supports to build meaningful connections with local communities. These relationships can provide cultural guidance and mentoring opportunities, showing commitment beyond hiring, ensuring young people feel supported, understood and valued.

Acknowledge cultural events

Give the whole team, including First Nations staff, the option to be included in planning events like, but not limited to, NAIDOC week. Support time off for cultural obligations including sorry business.



Proudly provided and supported by

mlen
Shaping youth pathways

Community Grants 2024